

2026

— FOLIO · MMXXVI  
EDITION ONE

INTERIOR DESIGN · MELBOURNE

# Selected Interior Works.

A MONOGRAPH OF TWENTY-PLUS YEARS ACROSS  
HOSPITALITY, RESIDENTIAL, RETAIL AND  
WORKPLACE INTERIORS. 2003 — 2026.

---

EMMETT SATI · INTERIOR DESIGNER

SELECTED WORKS · 2003 — 2026

# Contents.

FOLIO 26 · MMXXVI  
SELECTED WORKS · 2003 — 2026

---

01	HOSPITALITY & WELLBEING	7 PROJECTS
02	RESIDENTIAL	5 PROJECTS
03	RETAIL & BRAND	3 PROJECTS
04	WORKPLACE & COMMERCIAL	3 PROJECTS
05	CONTEMPORARY CONCEPT & RENOVATION	2 PROJECTS
06	EXHIBITION STANDS	13 PROJECTS
07	SPECIALIST DISABILITY ACCOMMODATION	2 PROJECTS

---

STUDIO · PRACTICE · APPROACH

# Considered, material-led interiors.

Emmett Sati is a Melbourne interior designer working across hospitality, retail, workplace and residential interiors — from boutique hotels in Istanbul's Old Town to high-end coastal homes on the Mornington Peninsula.

The work is quietly material-led: moving from brief and site outward, building atmosphere from honest materials, considered detailing and joinery resolved to shop-drawing level. Underwriting the design is nine years of project and contract management on Melbourne sites.

— EMMETT SATI · INTERIOR DESIGNER

# 01

## Hospitality & Wellbeing.

7 PROJECTS

OTTOMAN PARK HOTEL  
OTTOMAN HOTEL IMPERIAL  
HOTEL IN OLD TOWN ISTANBUL  
HOTEL ON VATAN AVENUE  
HAMAM IN BAKU  
AESTHETICIAN'S CLINIC  
DENTAL CLINICS FRANCHISE



# 01.

HOSPITALITY & WELLBEING

PRIMARY DESIGNER

## Ottoman Park Hotel.

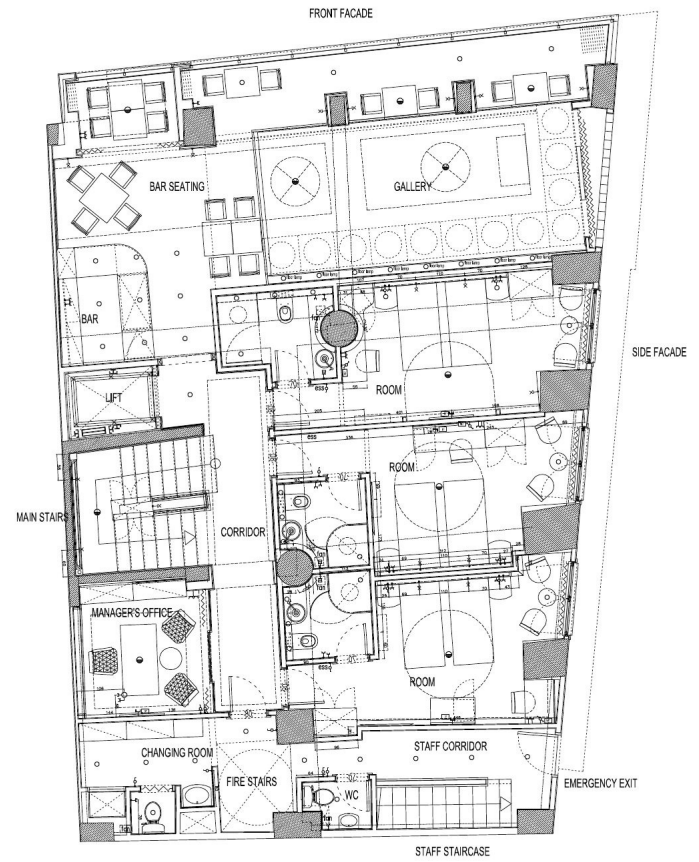
LOCATION	Kadirga, Istanbul
TYPE	Boutique Hospitality · Heritage Renovation
ROLE	Primary Designer
YEAR	2008 – 2010
STATUS	Completed

**A heritage hotel in central Istanbul reset as a boutique hospitality experience.**

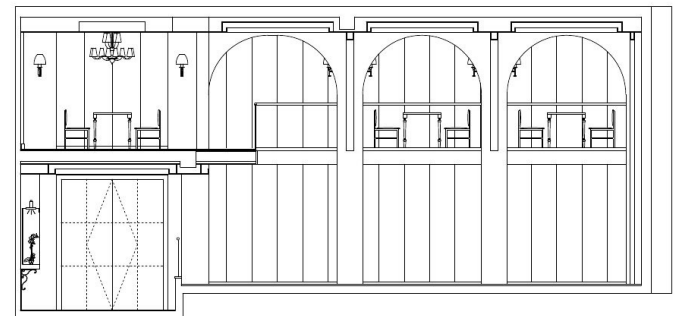
Working across building design and interiors — envelope, rooms, public spaces and the considered detailing that lifts a boutique hotel beyond its category. Warm timber, layered textile, restrained patterning, contemporary lighting against the building's stone bones. A rooftop terrace restaurant crowns the plan. Completed and operating.



GUEST ROOM



MEZZANINE FLOORPLAN



SECTION — MEZZANINE & LOBBY





## 02.

### Ottoman Hotel Imperial

PRIMARY DESIGNER

LOCATION

Old Town, Istanbul

TYPE

Hospitality · Heritage Room Renovations

ROLE

Primary Designer

YEAR

2009

STATUS

Completed

Room renovations within a heritage hotel in Istanbul's old quarter.

Considered finishes, refreshed casegoods, lighting design and soft furnishings selection. Completed and in operation.





# 03.

## Hotel in Old Town Istanbul

PRIMARY DESIGNER

### LOCATION

Sultanahmet, Istanbul

### TYPE

Boutique Hotel

### ROLE

Primary Designer

### STATUS

Design Development

A boutique hotel concept inside Istanbul's most-visited quarter.

Heritage envelope, contemporary interior atmosphere. The lobby sets the register — quiet, layered, materially literate.



## 04.

HOSPITALITY & WELLBEING

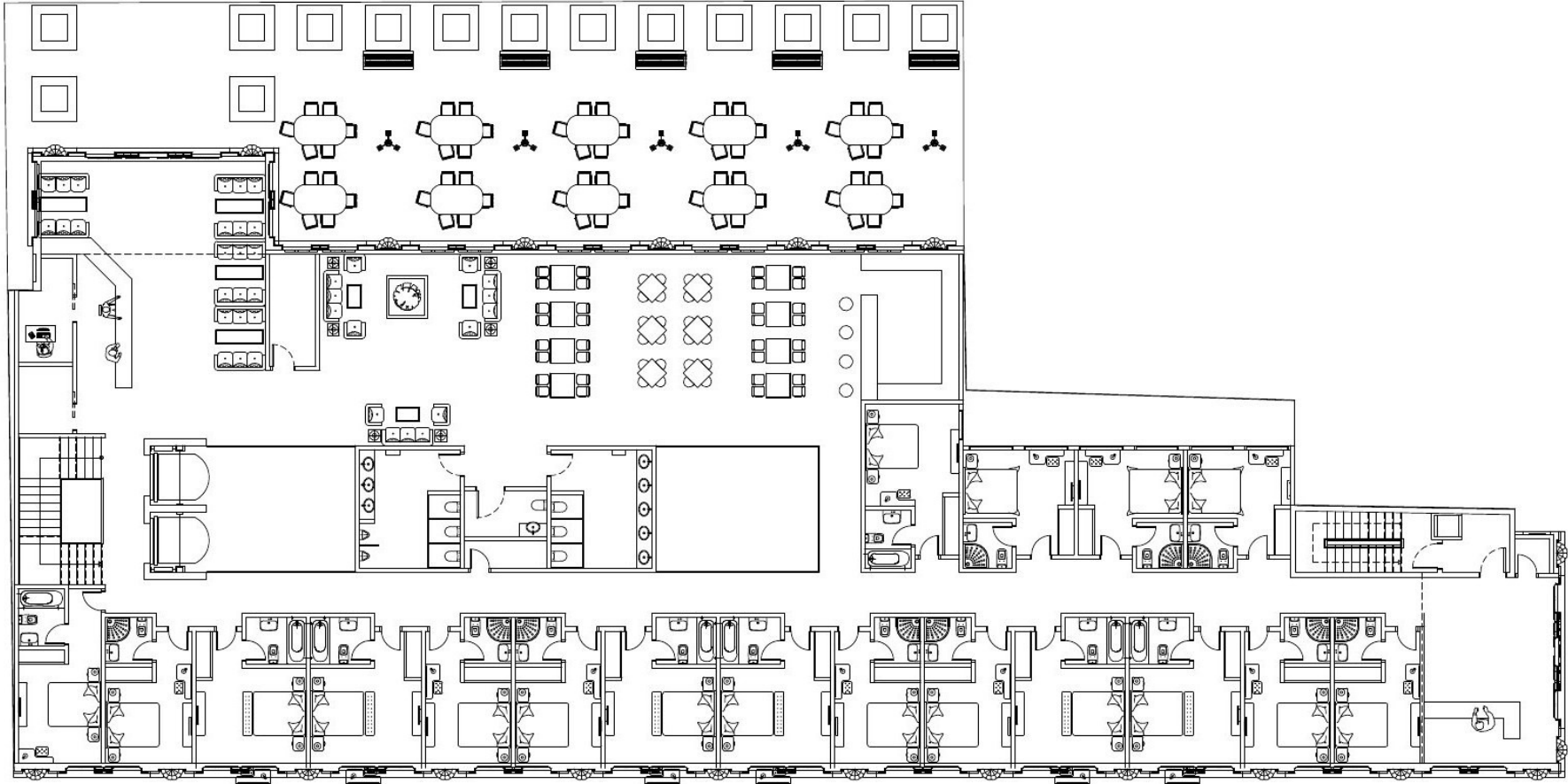
PRIMARY DESIGNER

# Hotel on Vatan Avenue.

LOCATION	Vatan Avenue, Istanbul
TYPE	Hospitality · Full Hotel Interiors
ROLE	Primary Designer
STATUS	Project Documented

### A full hotel interiors program on Vatan Avenue.

Public spaces, rooms, circulation and food-and-beverage areas designed as a coordinated whole — from the facade renovations in neo-classical Istanbul style, to all interiors and services.





05.

## Hamam in Baku

PRIMARY DESIGNER

### LOCATION

Baku, Azerbaijan

### TYPE

Private Wellness · Hamam

### ROLE

Primary Designer

### YEAR

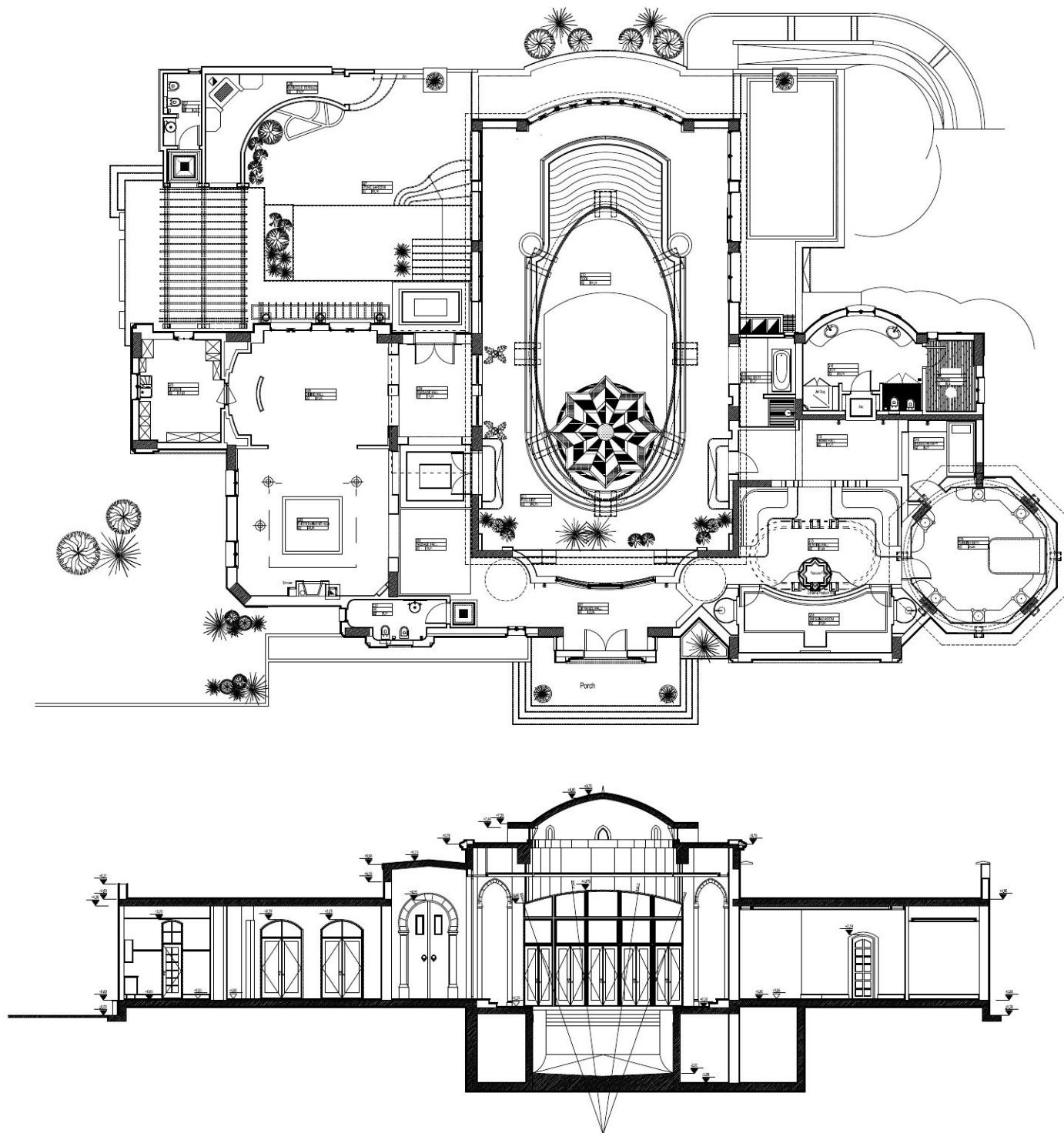
2007

### STATUS

Project Documented

A private hamam set within a high-end Baku estate — wellness as a domestic ritual.

Traditional hamam typology — central göbektaş, vaulted ceiling, controlled steam atmosphere, the main heated pool — read through a contemporary lens. Travertine, brushed bronze fittings, ambient warm light. Resolved in plan, elevations, section and 3D visualisation.





06.

HOSPITALITY & WELLBEING

PRIMARY DESIGNER

## Aesthetician's Clinic.

LOCATION Nişantaşı, Istanbul

TYPE Aesthetic Medical Clinic

ROLE Primary Designer

YEAR 2011

STATUS Completed

**An aesthetic clinic in Istanbul's high-fashion quarter — clinical confidence in a hospitality register.**

Calming palette, soft lighting, joinery resolved to hide the clinical without denying it. Patient as guest. Completed and operating.





## 07.

### Dental Clinics Franchise

DESIGN TOUCH-UPS

LOCATION

Istanbul

TYPE

Healthcare · Clinic Program

ROLE

Design Touch-ups

STATUS

Built · Multi-site

A dental clinic interior program — designed to dial down clinical anxiety.

Clean white brand representation throughout interior space, considered patient circulation from lobby to corridor to consulting rooms and theaters — applied consistently across multiple sites.





CORRIDOR

CONSULTATION ROOMS

# 02

## Residential.

5 PROJECTS

CONCRETE & LIGHT  
COASTAL RESIDENCE IN RYE  
APARTMENT IN MALTEPE  
APARTMENT IN BAKU  
BODRUM COASTAL VILLA



08.

## Concrete & Light

PRIMARY DESIGNER

### LOCATION

Timbarra Court, Geelong

### TYPE

Single Residence · Concept Reimagining

### ROLE

Primary Designer

### YEAR

2026

### STATUS

Concept Development

A suburban Geelong home reset as an experiment in Tadao Ando-influenced restraint.

GFRC panels, narrow light slots, oak floors warming the cool palette. Minimalist interiors resolved as a continuous quiet volume; the discipline is in what stays the same.

New garage / workshop addition placed to generate central courtyard nature patch.





09.

## Coastal Residence in Rye

DESIGN TOUCH-UPS

## LOCATION

Rye, Mornington Peninsula

## TYPE

Private Residence · Renovation

## ROLE

Design Touch-ups

## YEAR

2024 – 2025

## STATUS

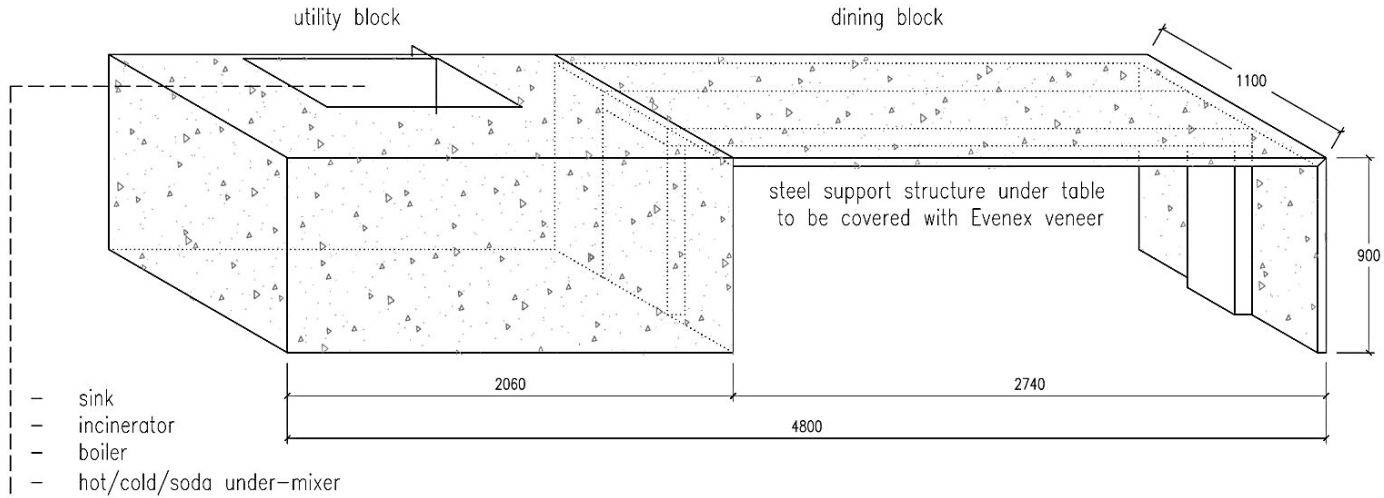
Fit-out Ongoing

Engaged mid-build to lift the interior of a high-end coastal renovation already in flight.

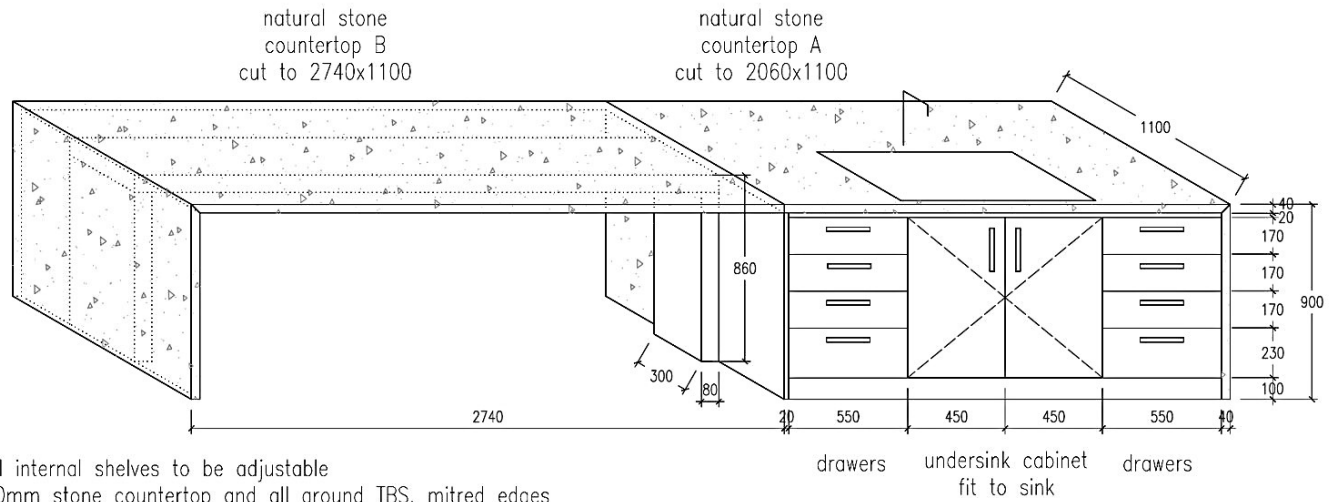
Bespoke joinery: stone-top kitchen island with mitred edges opening to the entertainment hall, integrated drawer and bin runs. A redesigned stair volume drawing light deep into plan. Detail resolved to shop-drawing fidelity — section and joinery drawings carried through to site.



FRONT SIDE



BACK SIDE



J04 - KITCHEN ISLAND

LOOM PROJECTS - 3 EVA ST RYE HOUSE JOINERY  
 J04 - KITCHEN ISLAND  
 TENDER ISSUE 01 - 24.03.2024  
 SCALE: 1/20



# 10.

## Apartment in Maltepe

PRIMARY DESIGNER

### LOCATION

Maltepe, Istanbul

### TYPE

Apartment · Full Renovation

### ROLE

Primary Designer

### YEAR

2010

### STATUS

Project Documented

An apartment-scale full renovation in Maltepe, Istanbul.

New layout, bespoke joinery, integrated lighting and considered hardware throughout — subtle natural tones at entrance hall escalate into full biophilic interiors across private spaces.







# 11.

## Apartment in Baku

PRIMARY DESIGNER

### LOCATION

Baku, Azerbaijan

### TYPE

Private Apartment · Renovation

### ROLE

Primary Designer

### STATUS

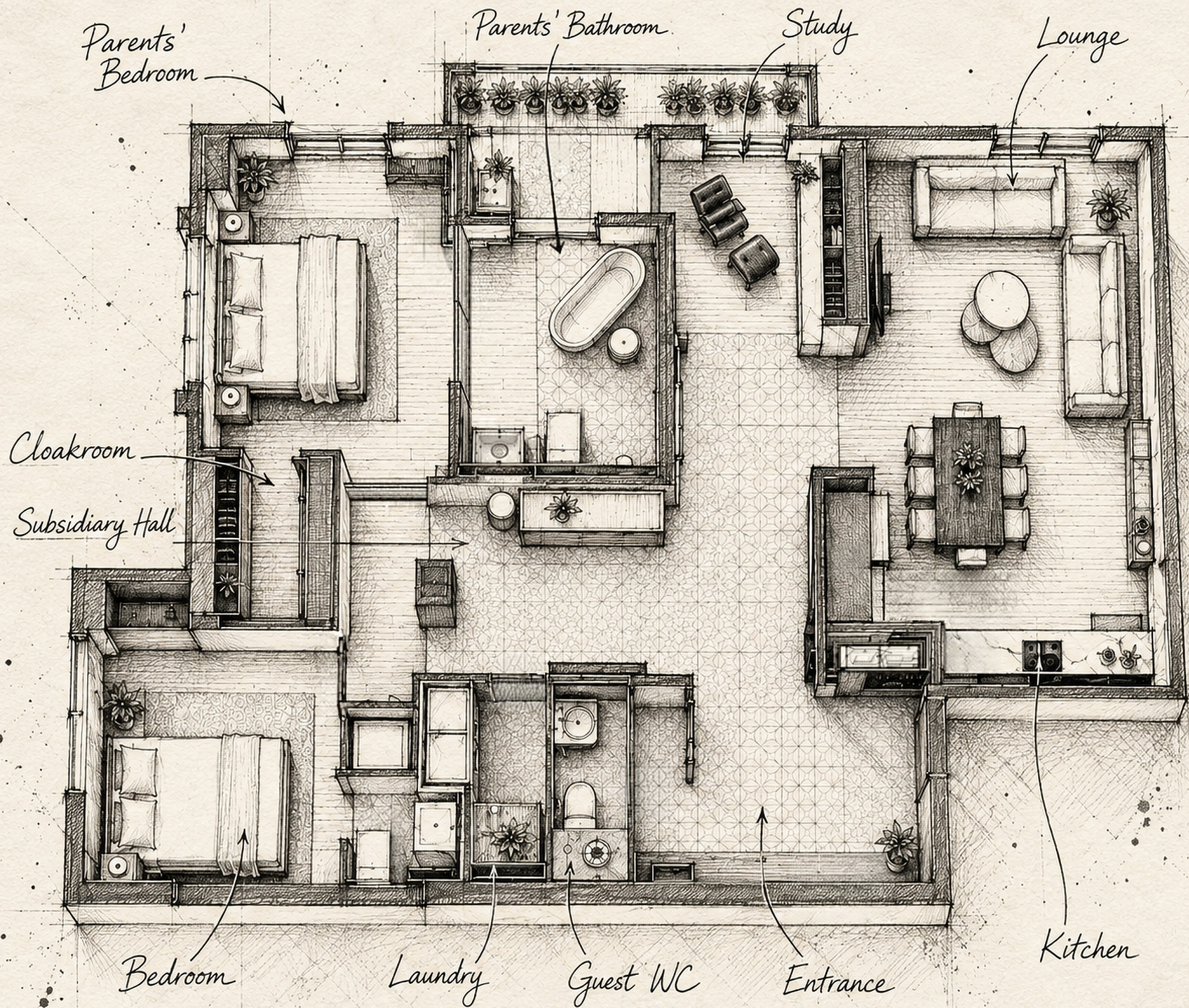
Project Documented

A high-end apartment renovation in Baku.

Refined material palette, layered textile, considered light. A complete interior package — designed to embody the client's signature vision — resolved from plan to FF&E.









12.

RESIDENTIAL

DESIGN TOUCH-UPS

## Bodrum Coastal Villa.

LOCATION

Bodrum, Turkey

TYPE

Private Summer Villa

ROLE

Design Touch-ups

STATUS

Built

**A private summer villa on the Aegean coast — a house for long, slow weekends.**

Natural stone, lime-washed plaster, woven natural fibre.  
Interior touch-ups and detail consultancy from the entrance courtyard through to the kitchen.

EMMETT SATI · FOLIO 26 · PROJECT 12/23



# 03

## Retail & Brand.

PICASSU FLAGSHIP STORES

KEBABELLA RESTAURANTS

SONY EURASIA MENA HQ

3 PROJECTS





13.

RETAIL & BRAND

PRIMARY DESIGNER

## Picassu Flagship Stores.

### LOCATION

Multi-Site, Turkey

### TYPE

Retail - Multi-Site Flagship Program

### ROLE

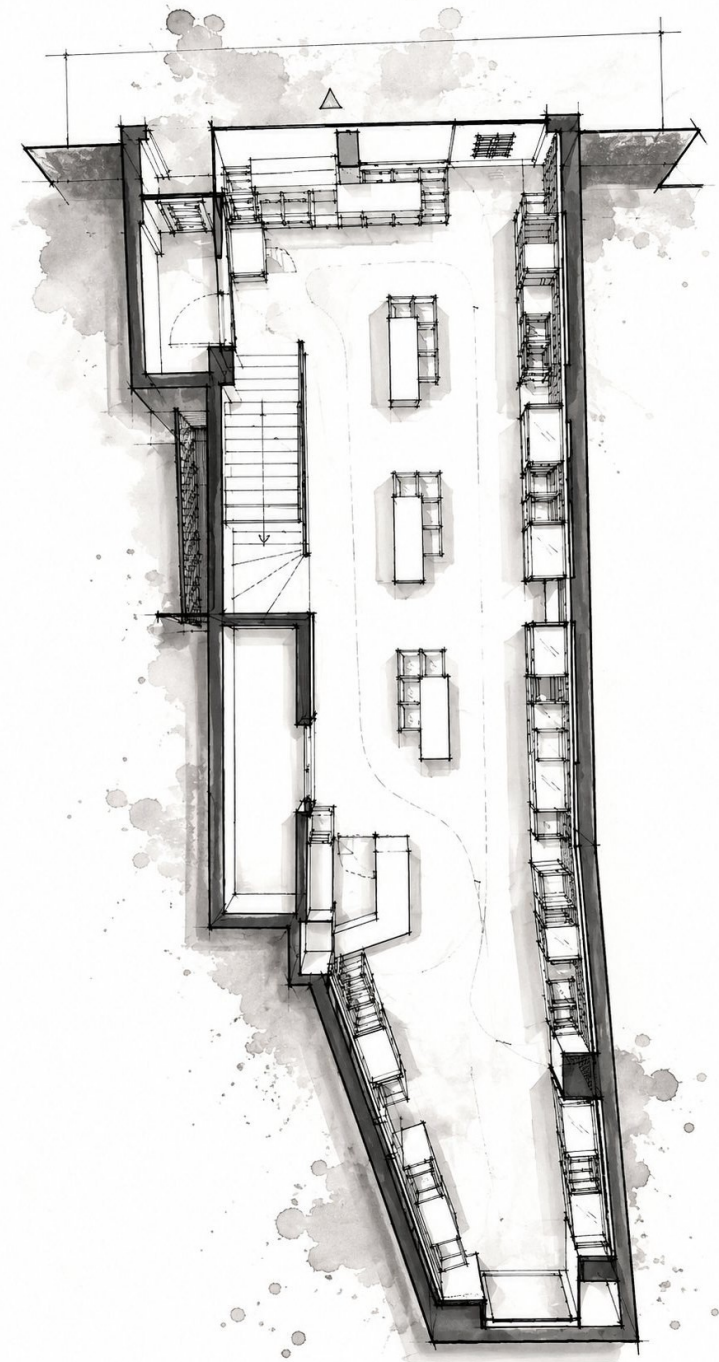
Primary Designer

### STATUS

Project Documented

**A flagship-store interior program for a Turkish retail brand.**

Considered fixture design, modular vitrines, layered lighting — a coherent brand environment from shopfront to a double-storey futuristic interior space, applied consistently across multiple sites.





# 14.

RETAIL & BRAND

PRIMARY DESIGNER

## Kebabella Restaurants.

### LOCATION

Multi-Site, Turkey

### TYPE

Hospitality & Retail · Restaurant Chain

### ROLE

Primary Designer

### STATUS

Multiple Sites Built

**Flagship restaurant interiors for a fast-food chain that wanted its interiors to outrun the category.**

Three formats designed as one family — a two-storey restaurant, a single-storey restaurant and a shopping-mall kiosk. Considered materiality, layered ceilings, custom service joinery, built for replication without losing distinction.

EMMETT SATI · FOLIO 26 · PROJECT 14/23





				
<b>DURUMLAR</b>	<b>KEBAP WRAPLAR</b>	<b>ÇİPS</b>	<b>TATLILAR</b>	<b>İÇEÇEKLER</b>
Tavuk Dürüm 1,50	Tavuk Wrap 1,50	Cips (Küçük) 1,00	Kemalpaşa Tatlısı 2,00	Ayrın 1,00
Et Dürüm 1,50	Et Wrap 1,50	Cips (Orta) 2,00	İrmik Helvası 3,00	Kutu İçecekler 2,00
Double Dürüm 1,50	Double Wrap 2,00	Cips (Büyük) 3,00		Su 2,00
Kebab Dürüm 1,50	Kebab Wrap 2,00			
Köfte Dürüm 1,00	Köfte Wrap 2,00			





15.

RETAIL & BRAND

PRIMARY DESIGNER

## Sony Eurasia MENA Region HQ.

### LOCATION

Istanbul

### TYPE

Brand HQ · Workplace

### ROLE

Primary Designer

### YEAR

2005

### STATUS

Project Documented

**The MENA Region head office for Sony — a workplace interior for a global brand.**

Designed as a sequence of working zones, meeting rooms and quiet brand-expression areas. Materiality dialled to a single recognisable, brand-aware register, resolved from lobby through section.

EMMETT SATI · FOLIO 26 · PROJECT 15/23

A-A

L-02



*Design built  
London*  
*Architect*  
*London*

# 04

## Workplace & Commercial.

JWBS OFFICE REFURBISHMENT

PRESTON MAZDA SERVICE CENTRE

MARU DESIGN OFFICE

3 PROJECTS





# 16.

## JWBS Office Refurbishment

PRIMARY DESIGNER

### LOCATION

Thomastown, Melbourne

### TYPE

Workplace · Builder HQ

### ROLE

Primary Designer

### YEAR

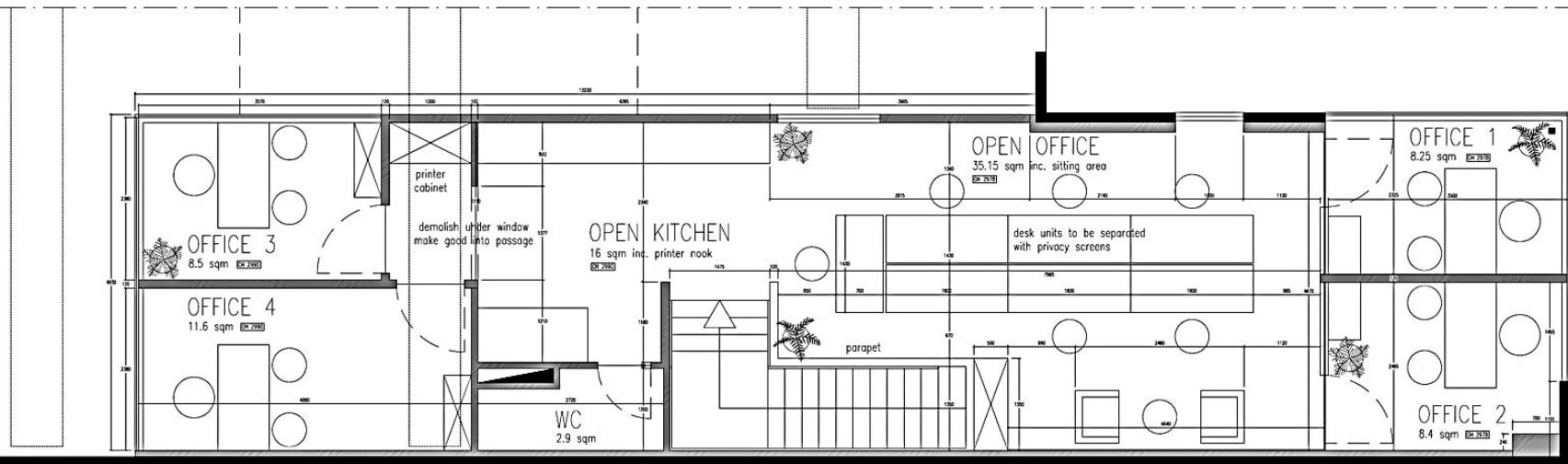
2024

### STATUS

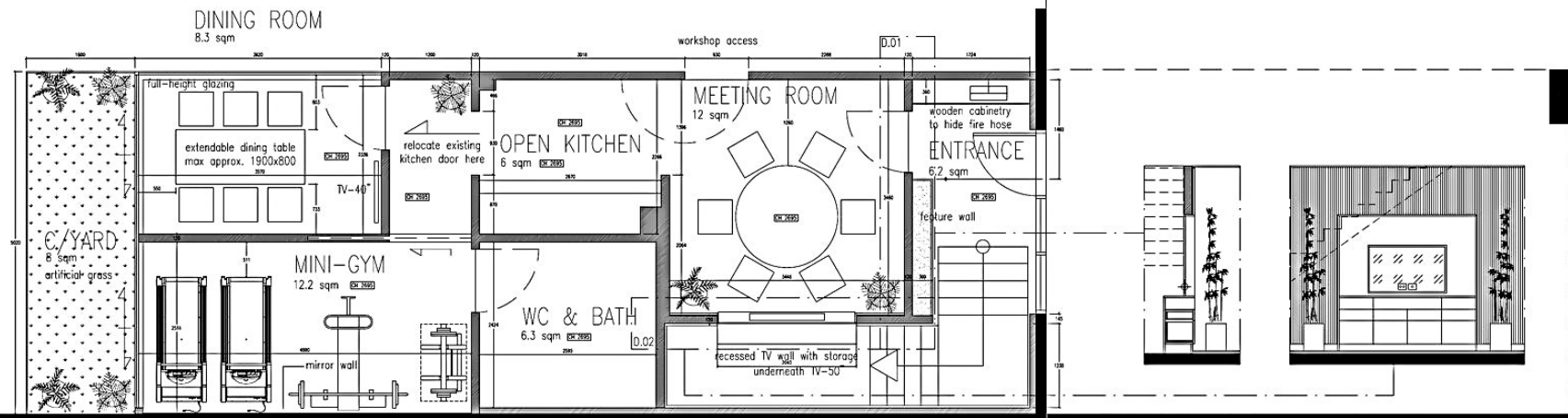
Concept & Documentation

A refurbishment of a builder's head office — workplace interior for the team that builds.

A contemporary, warm office that signals the company's design literacy to clients and consultants. Multiple-alternative concept designs and documentation set carried together.



FIRST FLOOR OFFICE AREA



GROUND FLOOR OFFICE AREA



17.

WORKPLACE &  
COMMERCIAL

PROJECT MANAGEMENT

## Preston Mazda Service Centre.

### LOCATION

Preston, Melbourne

### TYPE

Retail-Service Fit-Out · 300 m<sup>2</sup>

### ROLE

Project Management

### YEAR

2024

### STATUS

Completed

**A 300m<sup>2</sup> high-end retail-service space — design by SpaceOS Melbourne, delivery by JWBS Commercial.**

As project consultant contract-work to JWBS, managing the fit-out: living wall installation, special joinery design and production, bespoke shop drawings, hands-on attention through delivery.

EMMETT SATI · FOLIO 26 · PROJECT 17/23



18.

WORKPLACE &  
COMMERCIAL

PRIMARY DESIGNER

## Maru Design Office.

LOCATION

Istanbul

TYPE

Workplace · Interior + Engineering Studio HQ

ROLE

Primary Designer

YEAR

2010

STATUS

Project Documented

**The head office for a multidisciplinary interior and engineering studio.**

An open studio with carefully zoned meeting and quiet spaces. Black-and-red brand accents integrated into design throughout, oak and porcelain floors, considered lighting — from the entry hall through to work spaces.

EMMETT SATI · FOLIO 26 · PROJECT 18/23



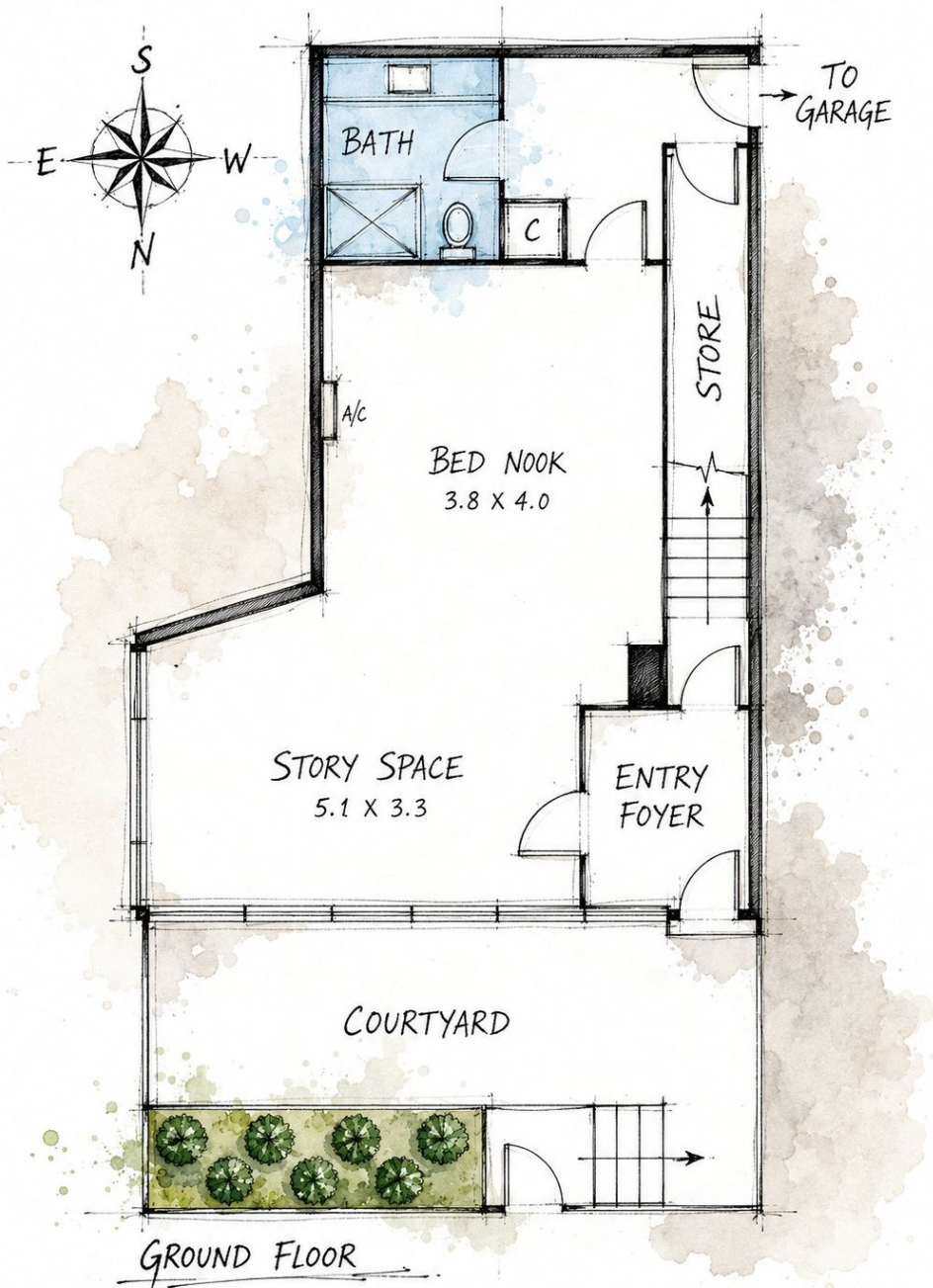
# 05

## Contemporary Concept & Renovation.

SHORT-STAY AIRBNB — TWO CONCEPTS

NIGHT CLUB WC RENOVATION

2 PROJECTS



# 19.

CONTEMPORARY CONCEPT  
& RENOVATION

PRIMARY DESIGNER

## One Space, Two Concepts.

LOCATION	Inner Melbourne
TYPE	Short-Stay Hospitality · Concept Study
ROLE	Primary Designer
YEAR	2025
STATUS	Concept & Documentation

**One short-stay apartment, two distinct interior concepts developed for a client to choose between.**

Theme One — Outback Indoors — brings red-earth pigments, rammed-style finishes, eucalypt timbers and woven natural fibres inside.

Theme Two — Melbourne Alley — takes the laneway in: brick, steel, bluestone, graphic edge. Both worked to the same floorplan, durable for guest turnover, distinctive enough to read as a place.



THEME 1 — OUTBACK INDOORS



THEME 1 — BATHROOM



THEME 2 — MELBOURNE ALLEY



THEME 2 — BATHROOM





20.

CONTEMPORARY CONCEPT  
& RENOVATION

PRIMARY DESIGNER

## Night Club WC Renovation.

LOCATION	Prahran, Melbourne
TYPE	Hospitality · Bathroom Refresh
ROLE	Primary Designer
YEAR	2024
STATUS	Concept

**A focused brief: re-do the toilets of a Prahran venue with the atmosphere the venue is known for.**

Bold colour, hard finishes, hospitality-grade detailing — a red-light concept that treats a small space as a full design problem: durable, beautiful, photographic.

# 06

## Exhibition Stands.

13 PROJECTS

# Brand environments, built to land instantly.

Several exhibition stand designs and completions across the European and Turkish trade-fair circuit. Stands are the most accelerated test of an interior designer — brand environments built and dismantled in days, where materiality, lighting, fixturing and storytelling must land instantly.

# SIEMENS

PROFESSIONAL

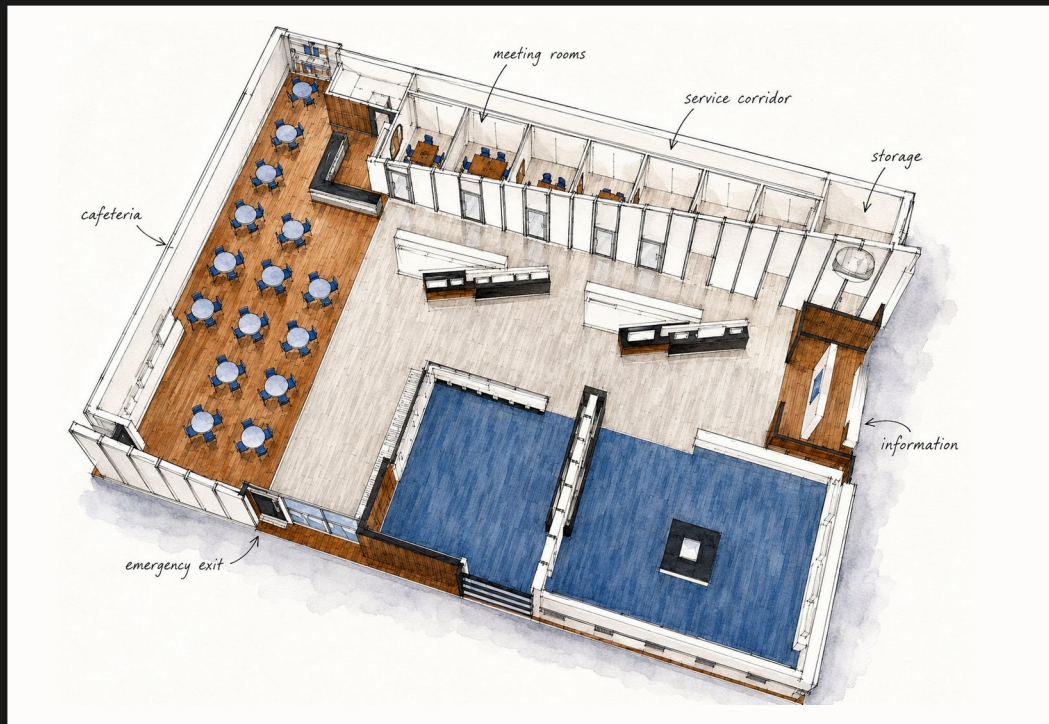
12.1



ECZACIBAŞI SANITARYWARE — LAS VEGAS · 2005



DEMIRDÖKÜM DEMRAD HEATING SYSTEMS — PARIS · 2005



PROFILO DISPLAY TECHNOLOGY — CONCEPT PERSPECTIVE · 2005



PROFILO DISPLAY TECHNOLOGY — FRANKFURT · 2005



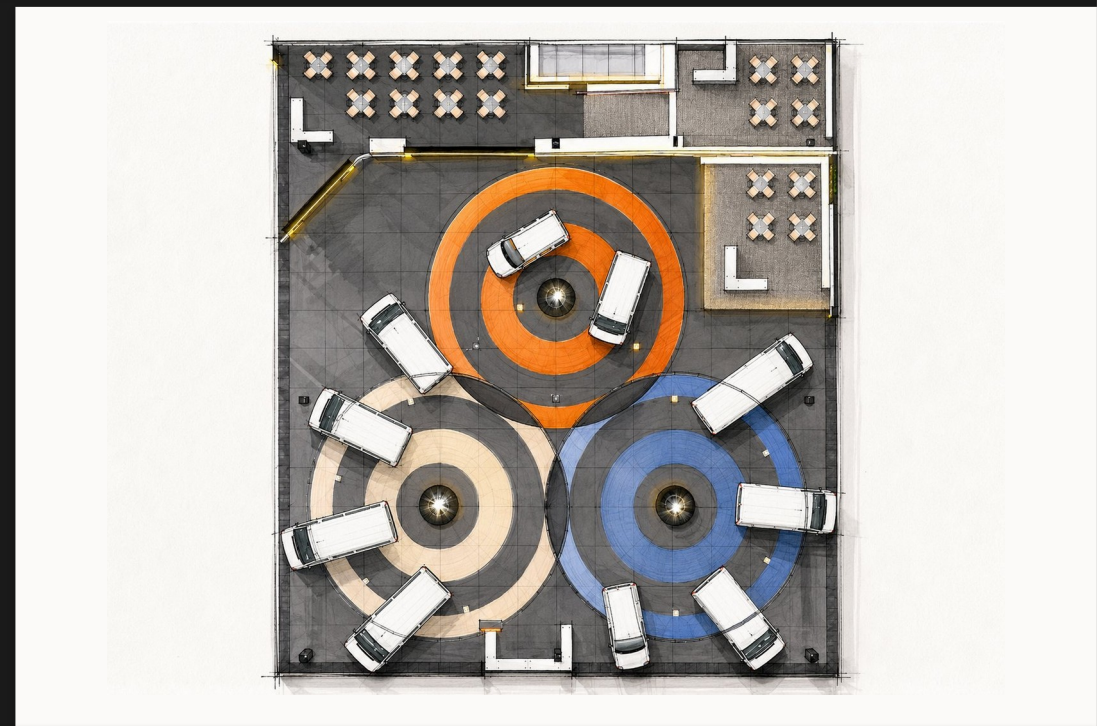
BOSCH HOME APPLIANCES — ISTANBUL · 2004



HYUNDAI MOTORS — ISTANBUL · 2004



RENAULT COMMERCIAL VEHICLES — ISTANBUL · 2005



RENAULT COMMERCIAL VEHICLES — STAND PLAN · 2005

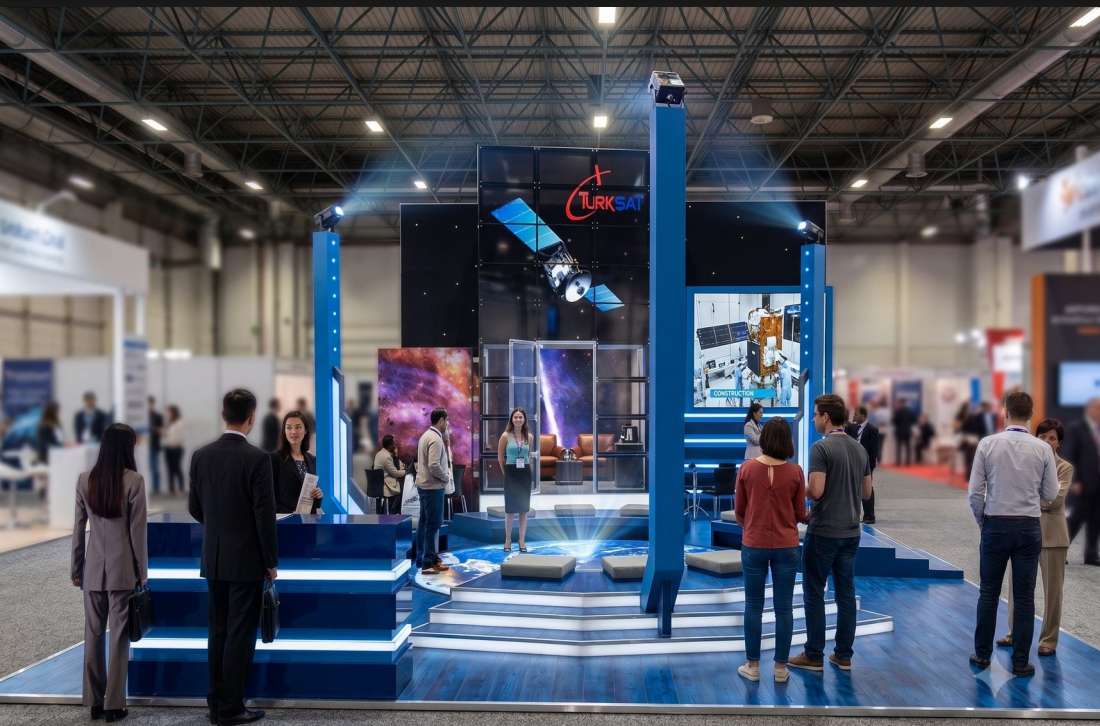




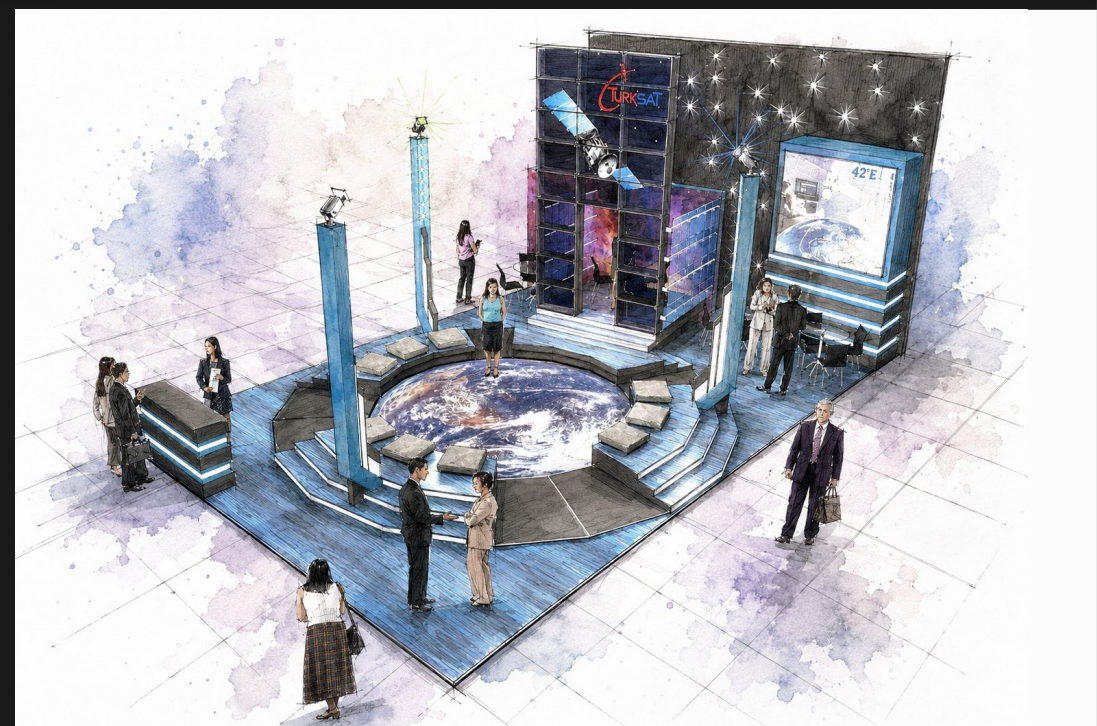
TEKOFAKS HOME TECHNOLOGY — İZMİR · 2004



CLEO ILLUMINATION TECHNOLOGY — İSTANBUL · 2005



TÜRSAT SATELLITE — İSTANBUL · 2005

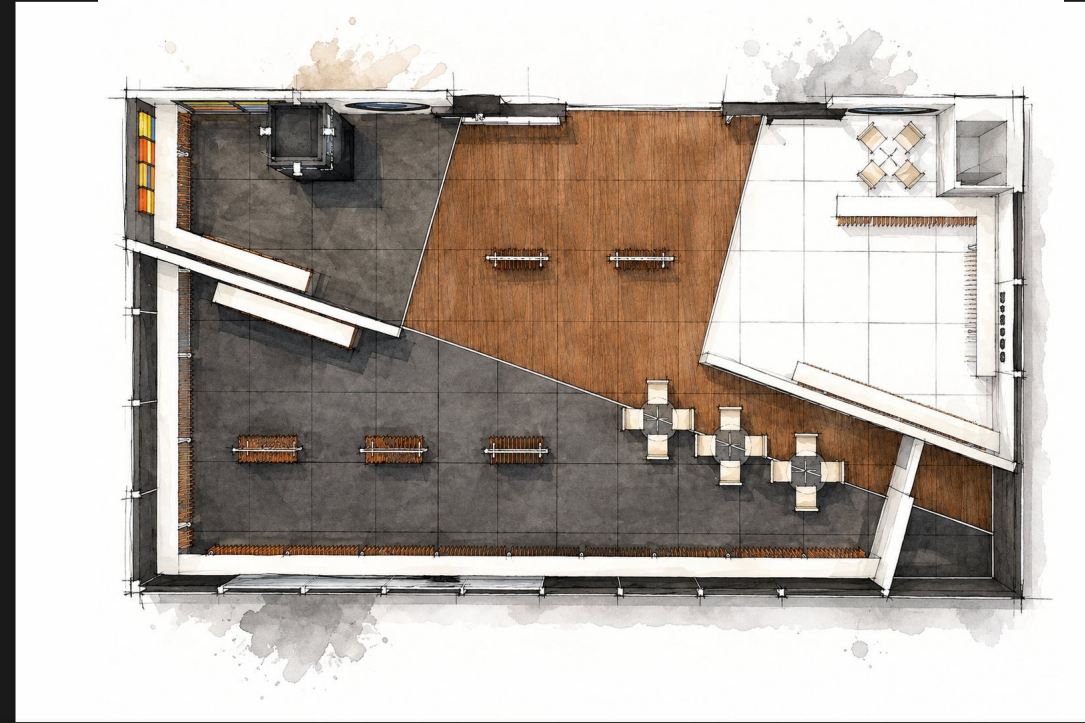


TÜRSAT SATELLITE — CONCEPT PERSPECTIVE · 2005





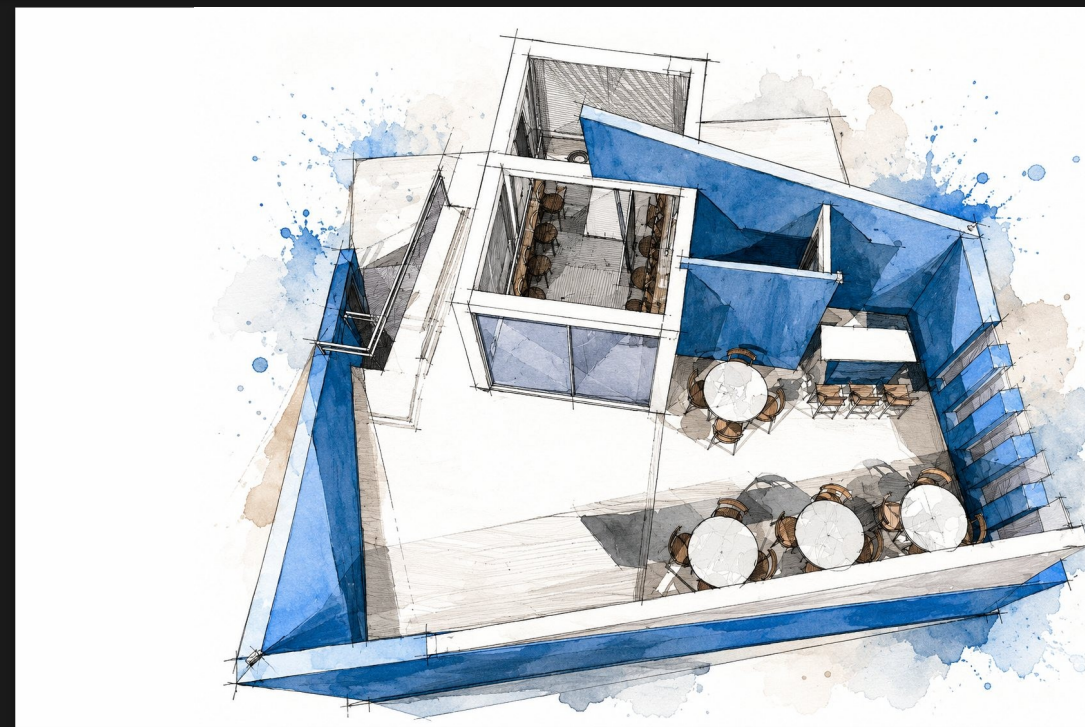
KÜÇÜKÇALIK TEXTILES — HANNOVER · 2005



KÜÇÜKÇALIK TEXTILES — STAND PLAN · 2005



MERT HYDRAULICS & PNEUMATICS — İZMİR · 2003



MERT HYDRAULICS & PNEUMATICS — CONCEPT PERSPECTIVE · 2003

# Specialist Disability Accommodation.

## Design management, documentation, compliance.

---

DESIGN MANAGEMENT · ONGOING 2026 —

### Doncaster Multi-Res SDA

16-20 THIELE STREET, DONCASTER

A nine-unit multi-residential SDA development with Jeff Williams Building Services. Builder-side design management — documentation, SDA compliance review, and coordination across consultants and contractors.

---

DESIGN MANAGEMENT · ONGOING 2026 —

### Shepparton SDA

44 CAMERON AVENUE, SHEPPARTON

A single-dwelling SDA in regional Victoria with Jeff Williams Building Services. Equivalent scope — documentation, coordination, compliance.

---

Deep working exposure to SDA Design Standard 2019 and the four NDIS dwelling categories — Improved Liveability, Fully Accessible, Robust, High Physical Support — and the documentation depth required for certification.

# Complete Interiors.

## INTERIOR WORKS IN FULL · 34 PROJECTS

Names set in red are projects featured as full pages in this folio.

---

- 01 **Villa touchups in Bodrum**
  - 02 Arow Stores Concept Design
  - 03 Hotel Ashur Lobby Renovation
  - 04 Builder's Office in Maltepe, Istanbul
  - 05 **Baku Hamam**
  - 06 **Bioritm**
  - 07 **Aesthetician Clinic**
  - 08 Cafe and Bistro in Beylikduzu, Istanbul
  - 09 **Apartment in Maltepe**
  - 10 Karpa Watches Central Office and Showroom
  - 11 **Kebabella**
  - 12 **Maru**
  - 13 Wedding Hall in Military Lodge, Istanbul
  - 14 **Picassu**
  - 15 **Apartment in Baku**
  - 16 Baker's Cafe in Maltepe, Ist
  - 17 Shoespark Designer Shoes Flagship Store
  - 18 **Sony Eurasia**
  - 19 Sony Play Floats in Shopping Malls
  - 20 Olympic Swimming Pool Complex in Beykoz, Ist
  - 21 Mosque in Esenyurt, Ist
  - 22 Library in Trabzon, Turkiye
  - 23 Wedding Hall in Mimaroba, Ist
  - 24 **Ottoman Park Hotel**
  - 25 **Ottoman Hotel Imperial**
  - 26 **Hotel in Old Town Istanbul**
  - 27 **Hotel on Vatan Avenue**
  - 28 **Dental Clinics Franchise**
  - 29 **Concrete & Light**
  - 30 **Coastal Residence in Rye**
  - 31 **JWBS Office Refurbishment**
  - 32 **Preston Mazda Service Centre**
  - 33 **Short-Stay Airbnb — Two Concepts**
  - 34 **Night Club WC Renovation**
-

# Complete Stands.

EXHIBITION STANDS IN FULL · 51 STANDS · 2003 — 2012

Names set in red are projects featured as full pages in this folio.

## 2003

Gürhan Gold

Mert

Savesa Security

Siemens

Volkswagen

## 2004

Alpay

Alsecco

Altınış Gold

Çiftçiler Honeymakers

ECA Emas HVAC

Elco HVAC

Elimsan Energy

Erdemir Steel

Le Color Stationary

Nokia

Rentzmann

Siemens Professional Services

## 2004 (cont.)

Avea Telecommunication

Bosch

Elmor Sanitaryware

Hyundai

ODE

Tekofaks

Turkish Airlines Popup

## 2005

Cleo

Demirdokum Dermad

Ding Zing

ECA Frankfurt

ECA Muder

ECA Water Concept

Vitra Las Vegas

Favori Gold

Gizir Furniture

Hannover Messe System Stands

IMMIB Ambiente

## 2005 (cont.)

IMMIB CeBIT

IMMIB Black Concept

ITKIB Modular Stands

Kucukcalik

Profilo Berlin

Seranit Sanitaryware

Oksijen IT

Kucukcalik Premiere

Renault Commercial

Supertekstil Fabrics

Turksat

## 2006

Daihatsu

ECA Milan

IMMIB Hong Kong

## 2012

Kargem

Kucukcalik

— CONTACT —

# Let's talk about your vision.



## DIRECT

[emmettsati@gmail.com](mailto:emmettsati@gmail.com)

0406 282 287

[www.emmettsati.com](http://www.emmettsati.com)

[linkedin.com/in/emmettsati](https://www.linkedin.com/in/emmettsati)

Brunswick

Melbourne · VIC 3056

## DESIGNER

**Emmett Sati**

**Interior Designer**

Open to senior interior designer roles across Melbourne  
and to SDA design leadership.

## REFERENCES

Adam Henry — Jeff Williams Building Services

Matt Omond — Private Client

Zeynep Ozguven — Ozguven Architecture, Istanbul

Available on request.